

# WELDED WIRE FORMS

TEMPORARY AND PERMANENT  
RETAINING WALLS & SLOPES

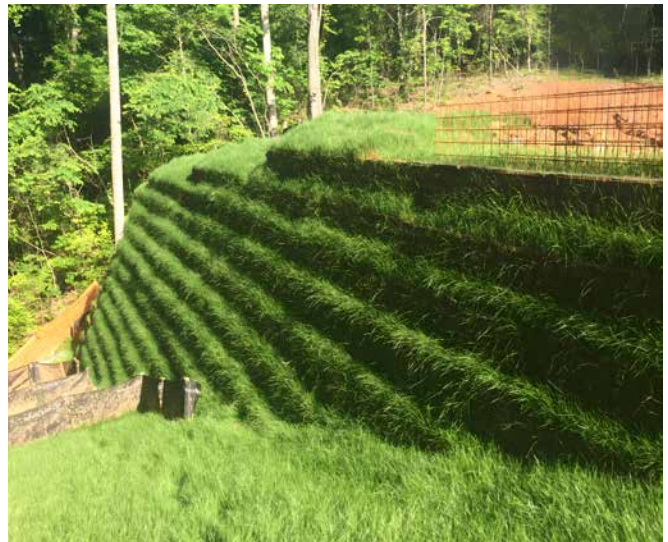
# WELDED WIRE FORMS

VERSATILE, COST-EFFECTIVE MSE STRUCTURES FOR WETLANDS, PONDS AND MORE.

Ferguson Waterworks' partnership with Earth Retention provides complete grade separation and retaining solutions for heavy civil contractors, general contractors and design-build teams. Earth Retention's American-made welded wire forms offer dependability and versatility. Furthermore, this cost-effective solution for Mechanically Stabilized Earth (MSE) is especially well-suited for areas of expected settlement, such as around wetlands and ponds. Welded wire forms integrate seamlessly with the landscape, offering a time-saving alternative to traditional retaining walls.

- More cost-effective than segmental retaining walls
- Provides more differential and total settlement
- Designed and manufactured in the USA
- Adaptable to the project's needs and the environment





## PRIMARY APPLICATIONS

- Retaining walls in and around wetlands & ponds
- Temporary retaining walls
- Bridge abutments
- Road phasing
- Load transfer platforms
- Vegetated walls
- Reinforced soil slopes

## FEATURES AND BENEFITS

### Easy Installation

Each form is 15 sq ft of wall face area and weighs approximately 26 lbs

### Cost-Effective Shipping

The ability to transport as much as 20,000 sq ft per flatbed truck

### Structural Resilience

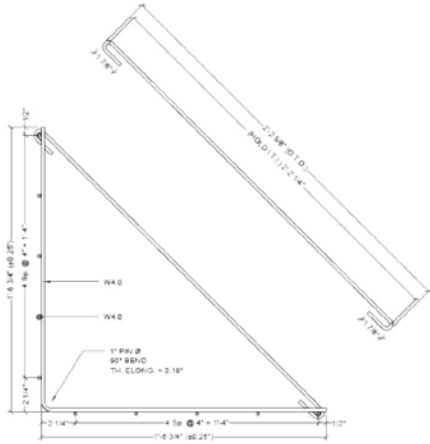
Able to withstand greater total and differential settlement than other types of MSE structures

### Economic Choice

More cost effective than other types of MSE structures

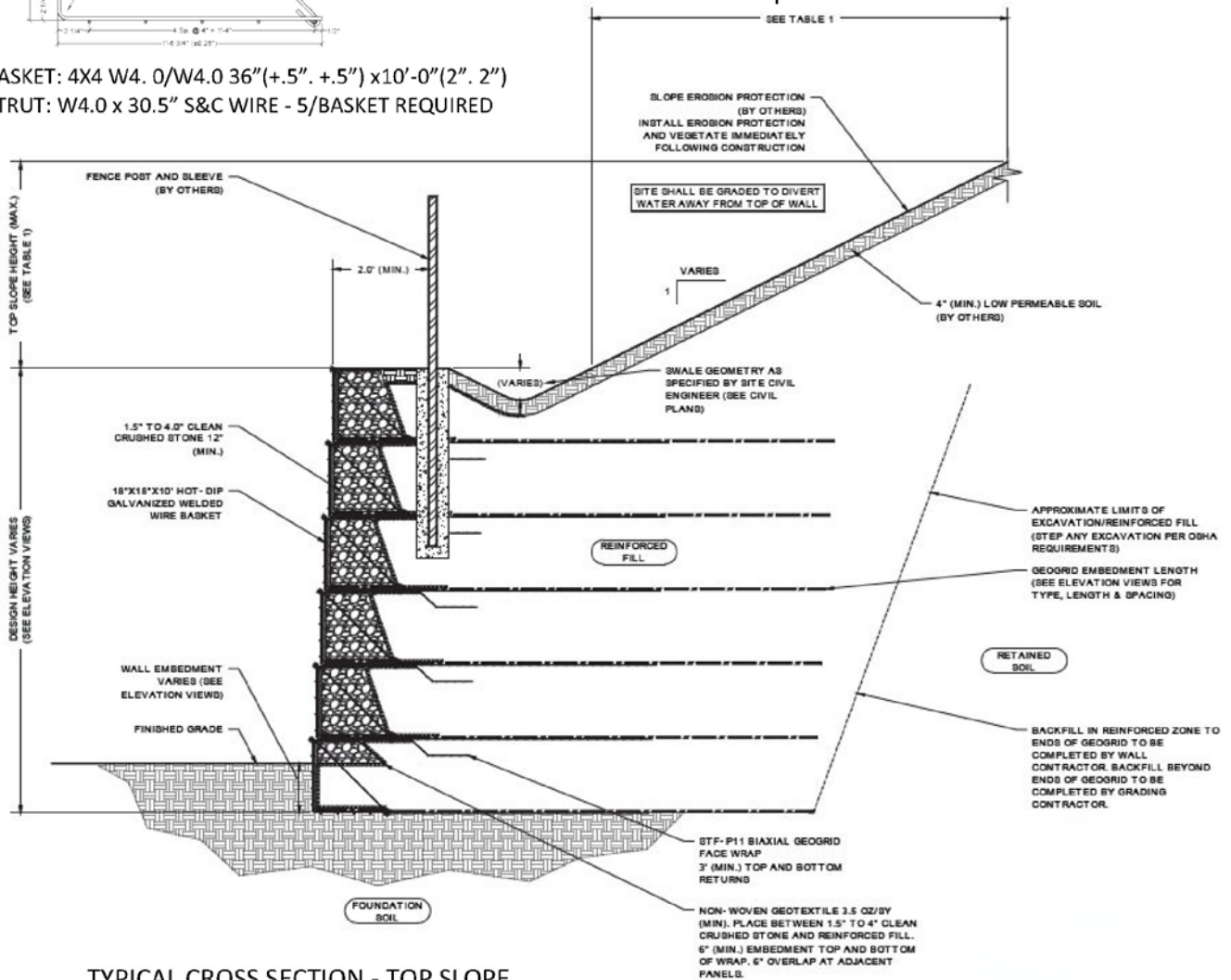


# HOT DIPPED WELDED WIRE FORMS



BASKET: 4X4 W4.0/W4.0 36" (+.5" . +.5") x 10'-0" (2" . 2")  
 STRUT: W4.0 x 30.5" S&C WIRE - 5/BASKET REQUIRED

Hot Dipped Welded Wire Forms, or Wire Baskets are used in many different applications such as temporary MSE structures, wetlands, ponds, and areas where the earth structure needs to blend well into the landscape. Wire Forms are more cost effective than cast-in-place, designed to shift and settle without compromise, and offer a time savings in installation vs. other retained earth systems. Wire Forms are an alternate solution to traditional retaining walls when differential settlement is expected in the foundation soils.

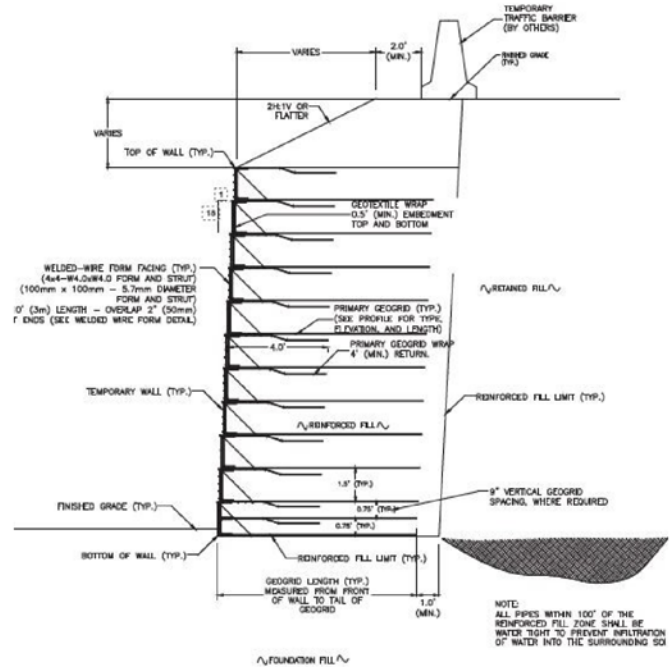


# BLACK STEEL WELDED WIRE FORMS

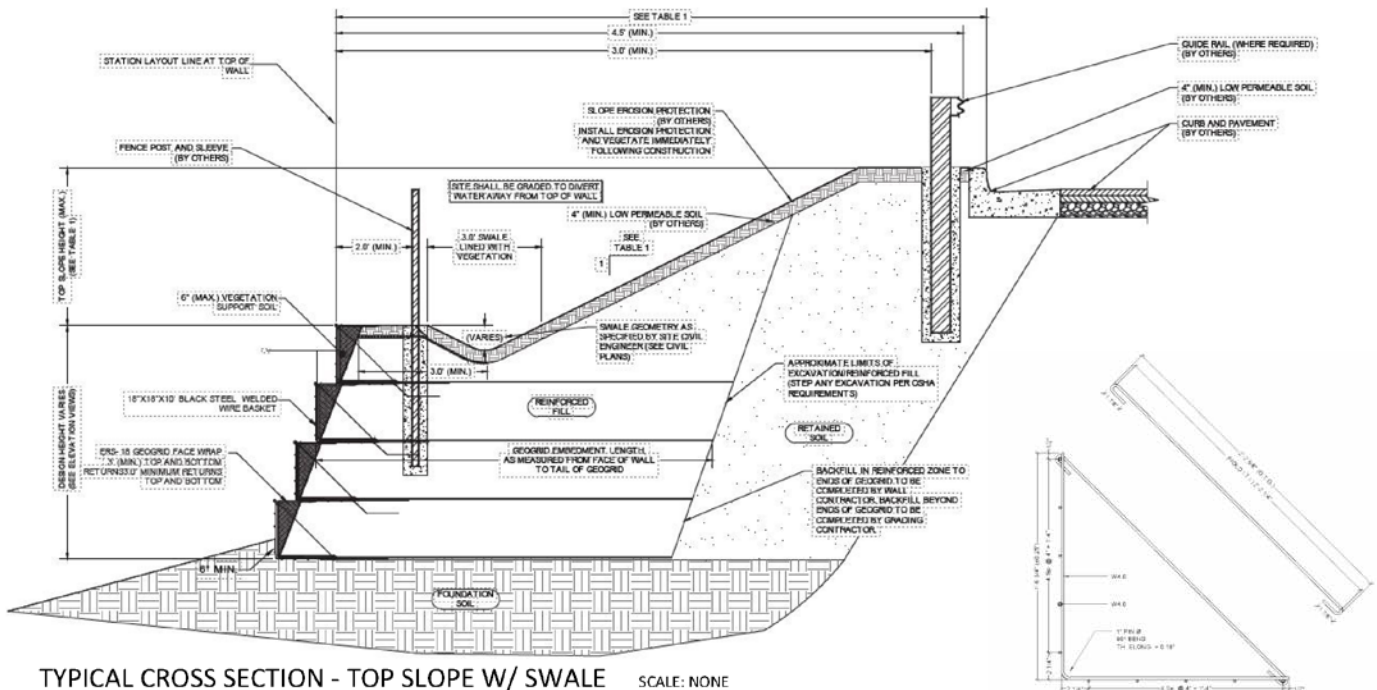
Black Steel Welded Wire Forms, or Wire Baskets are used in many different applications such as temporary MSE structures, wetlands, ponds, and areas where the earth structure needs to blend well into the landscape.

Wire Forms are more cost effective than cast-in-place, designed to shift and settle without compromise, and offer a time savings in installation vs. other retained earth systems.

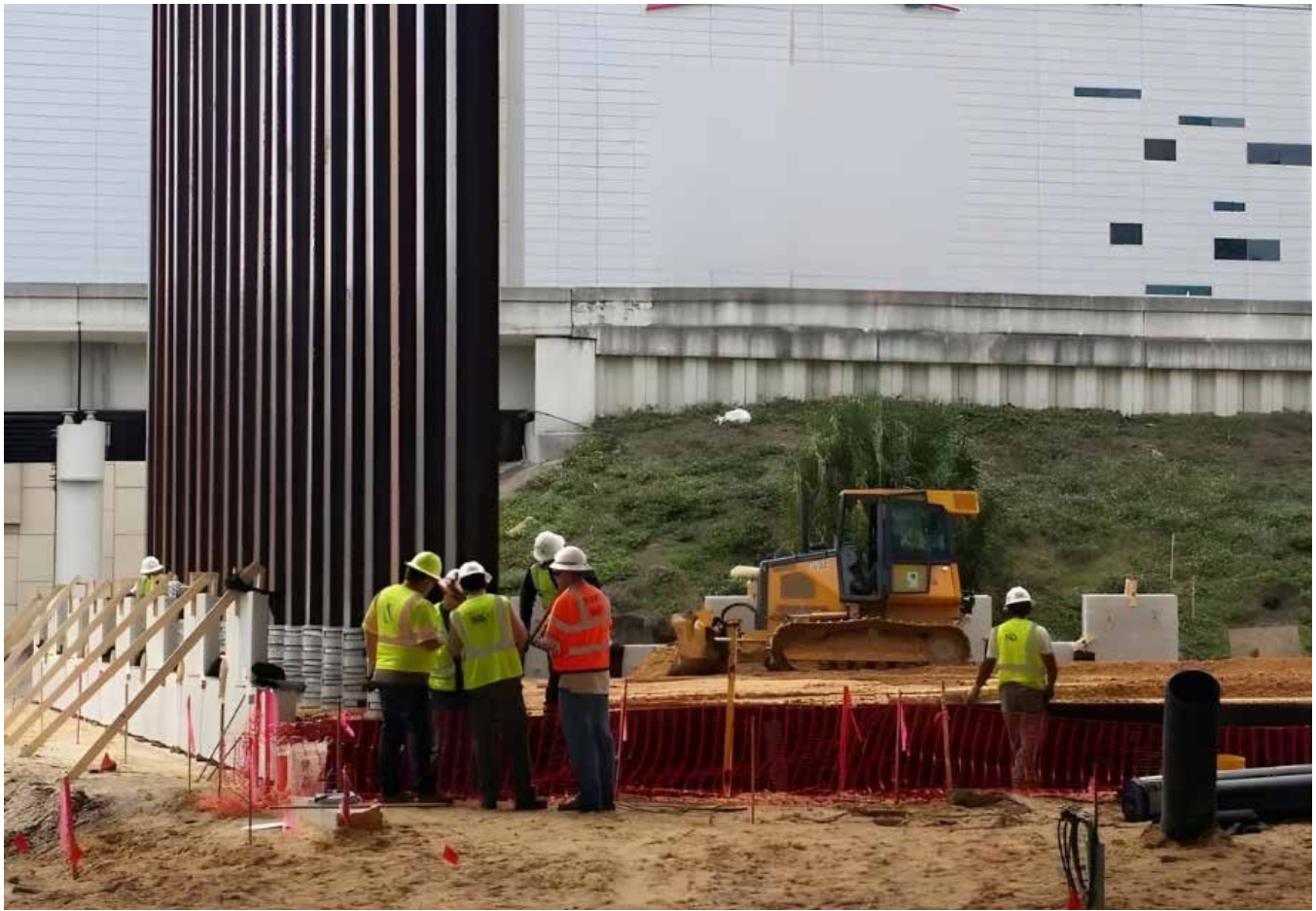
Wire Forms are an alternate solution to traditional retaining walls when differential settlement is expected in the foundation soils.



TYPICAL TEMPORARY WALL CROSS SECTION  
SCALE: NONE



TYPICAL CROSS SECTION - TOP SLOPE W/ SWALE SCALE: NONE



## I-4 EXPANSION PROJECT ORLANDO, FL

Many large-scale construction projects require temporary structures to be installed for support and worksite access during the course of the project.

The Florida Department of Transportation project “I-4 Ultimate” required several temporary retaining walls for the reconstruction and expansion of 21 miles of I-4 in and around Orlando, Florida.

The engineering team at Earth Retention provided designs and supplied materials for the Skanska-Granite-Lane (SGL) Design Build Team.





Visit us online for more information on  
these products and our scope of services.

**[FERGUSONWATERWORKS.COM](https://www.fergusonwaterworks.com)**

**FERGUSON**  
WATERWORKS

©2026 Ferguson Enterprises, LLC 0326