

ECORASTER[®]
BLOXX

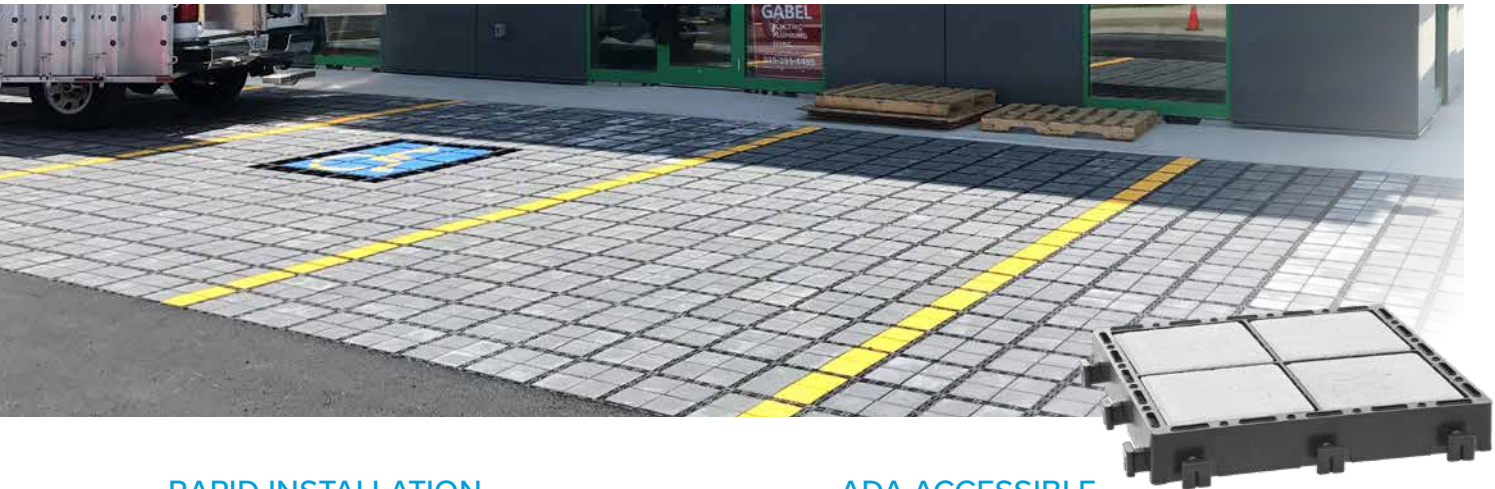
GROUND REINFORCEMENT SYSTEM



PERMEABLE GROUND REINFORCEMENT

INTERLOCKING CONCRETE PAVING UNITS

The creative and flexible design of EcoRaster Bloxx delivers reliable permeable ground reinforcement. It is cost-effective and saves time. Install EcoRaster Bloxx virtually anywhere. Just snap them together and drop in the paver inserts. There is no need to fill the gaps. Created in Germany from 100% recycled material.



RAPID INSTALLATION

Install in seconds! Simply snap together and insert the blocks. Blocks are even replaceable without loosening the cluster. One person can install about 20 m²/hour

INNOVATIVE DESIGN

EcoRaster Bloxx has integrated anti-clogging drainage, offering one of the best infiltration rates in the industry.

SAFE AND DURABLE

Bloxx features a unique safety interlocking, which means no bumps and no tripping hazards. Supports up to 800 t/m² when filled.

SPACE FOR CREATIVITY

Available in a variety of colors, select from dark gray, light gray and red—for customized layouts. Combine colors for built-in pavement markings and parking space delineation. Paver accessories available.

ADA ACCESSIBLE

Ecoraster systems can support ADA-accessible parking when surface transitions are less than a 1/2". ADA compliance is determined by site design and installation, not by individual product certification. Final compliance with ADA requirements and local regulations is the responsibility of the facility owner.

VERIFIED PERFORMANCE

- ASTM C140/C140M-23a – Concrete masonry unit sampling and testing
- ASTM C936 – Interlocking concrete paving units (compressive strength, absorption and density)
- ASTM D6684-18 – Freeze/thaw durability
- ASTM E1980 – Solar Reflectance Index (SRI)
- ANSI A326.3-2021 – Dynamic coefficient of friction (wet and dry)
- ASTM C418-20 – Abrasion resistance
- ASTM F1951-08 – ADA surface accessibility compliance



DESIGN GUIDANCE

FOR BASE REQUIREMENTS USED UNDER ECORASTER PRODUCTS

This design guidance can be used as a starting point when using Ecoraster products. The information provided below indicates the suggested *minimum* base requirements. Projects with weaker soils like CL down to PT should consult a qualified engineer for specific guidance. These base depths are for structural strength only and are not intended to meet any stormwater detention requirements.

ECORASTER BLOXX

VEHICLE TYPE/LOAD	CBR 2 - 4	CBR 4 - 6	CBR > 6
Heavy Truck < 90,000 lbs	8	6	4
Medium Truck < 60,000 lbs	6	4	4
Light Truck < 40,000 lbs	4	2	2
Car, Pickup < 8,000 lbs	2	2	0
Cart Path, Trail < 1,000 lbs	2	0	0

Normal Traffic:



Occasional Use:



- All depths are in inches
- CBR = California Bearing Ratio
- For CBR < 2, contact Purus NA Ecoraster, Inc. for recommendations
- These depths are suggestions only and all designs should be approved by a qualified engineer
- All depths are for uniformly graded angular gravel, per AASHTO guidelines

Using Bloxx color options to designate parking zones.



QUICK PAVEMENT SOLUTION

FROM STORMWATER MANAGEMENT TO UNIQUE PARKING LOT DESIGNS, USE COST-EFFECTIVE BLOXX

SIZING AND TECHNICAL DATA

Dimensions	330 mm x 330 mm x 50 mm 12.99" x 12.99" x 1.97"
Weight	approx. 85 kg 187.39 lbs (incl. blocks)
Locking System	36 T-elements / m ² 6 T-elements / sq ft
Dimensional Stability (Temperature)	-50° to +90 ° C -58° F to +194°F
Block Dimensions	140 x mm 140 mm x 45 mm 5.51" x 5.51" x 1.77"
Weight per Block	approx. 2.12 kg 4.67 lbs
Available Colours	red, white, dark grey and light grey

APPLICATIONS

- Parking lots
- Universal accessibility
- Driveways
- Pedestrian and bicycle paths



CONVENIENT PACKAGING FOR DELIVERY

MODEL	E50	E40	E30	BLOXX
Nominal size per piece	13" x 13" x 2"	13" x 13" x 1.6"	13" x 13" x 1.2"	13" x 13" x 2"
Pieces per layer	12	12	12	12
Layers per pallet	43	55	71	43
Pieces per pallet	516	660	852	516
Pallets per truck	26	26	26	26
Coverage per pallet	608 ft ²	778 ft ²	1004 ft ²	608 ft ²
Pieces per pallet	1217 lbs	928 lbs	1137 lbs	902 lbs

Visit us online for more information on these products and our scope of services. [FERGUSONWATERWORKS.COM](https://www.fergusonwaterworks.com)

FERGUSON
WATERWORKS