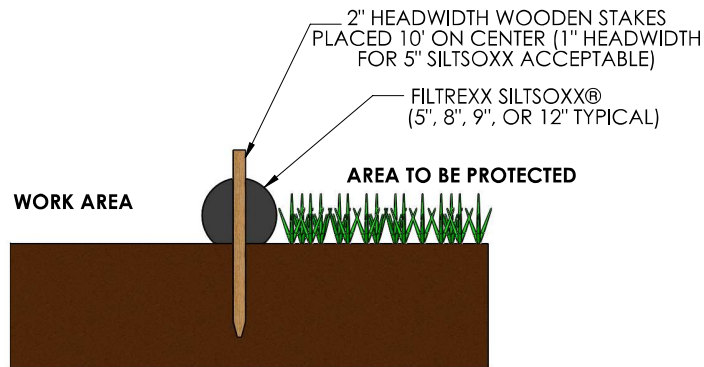
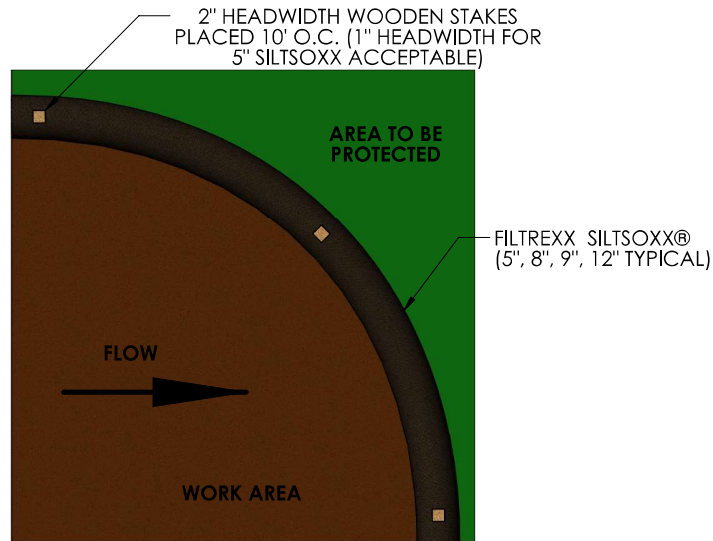


## FILTREXX SILTSOXX®



SECTION VIEW



TOP VIEW

- NOTES:
1. ALL MATERIAL TO MEET FILTREXX® SPECIFICATIONS.
  2. SILT SOXX FILL TO MEET APPLICATION REQUIREMENTS.
  3. COMPOST MATERIAL TO BE DISPERSED ON SITE, AS DETERMINED BY ENGINEER.

THIS DRAWING AND ALL INFORMATION CONTAINED HEREIN IS THE PROPERTY OF FILTREXX INTERNATIONAL, LLC AND MAY NOT BE COPIED, REPRODUCED OR DIVULGED TO UNAUTHORIZED PERSONS WITHOUT THE EXPRESS WRITTEN CONSENT OF FILTREXX INTERNATIONAL IT IS PROVIDED SOLELY FOR THE CONVENIENCE OF THE USER AND SHALL BE RETURNED UPON REQUEST.

DIMENSIONS ARE IN INCHES  
ANGULAR: BEND  $\pm 2^\circ$   
TWO PLACE DECIMAL  $\pm .015$   
THREE PLACE DECIMAL  $\pm .005$

DO NOT SCALE DRAWING

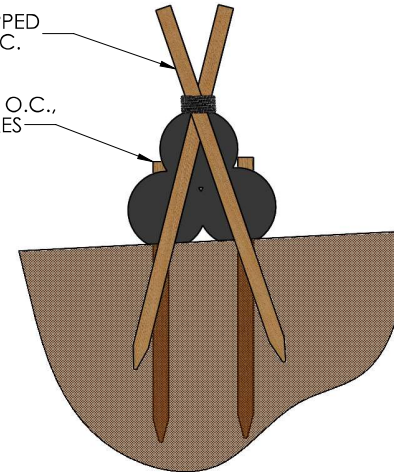
NAME	DATE
DRAWN DAN	6/11/2013
CHECKED	
ECO	

<b>filtrex</b> <small>LAND IMPROVEMENT SYSTEMS</small> <i>let nature do it.</i>		<small>FILTREXX INTERNATIONAL            35481 GRAFTON EASTERN RD.            GRAFTON, OH 44044            440-752-3407            WWW.FILTREXX.COM</small>
<small>SIZE</small> <b>D</b>	<small>TITLE</small> FILTREXX® SILT SOXX™ & SEDIMENT TRAP™ DETAILS	<small>REV.</small> NC
<small>DWG/PART NO.</small>		<small>SHEET 1 OF 1</small>

## FILTREXX® PYRAMID STAKING DETAIL

- (2) 2"x2"x48+" HARDWOOD STAKES, WRAPPED TOGETHER WITH 16 GAUGE WIRE, 10' O.C.

2"x2"x36" HARDWOOD STAKE, 10' O.C., STARTING 5' FROM ANGLED STAKES



## COMPOST SOCK CONNECTION/ATTACHMENT DETAIL

