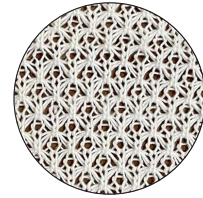


# SILTSOXX RH®

## Natural+ Rice Hull Filter Sock

### SiltSoxx RH Natural+ Product Specs:

|   |  |
|---|--|
| Netting Material Type                             | Natural + Pallet Netting<br>All Natural Biodegradable Wood Fiber |
| Netting Degradation                               | Biodegradable  |
| Netting Diameters                                 | 9", 12"  |
| Netting Opening Size                              | 1/8"   |
| Netting Color                                     | Off-White  |
| Fabric Tensile Strength (ASTM D4595) <sup>1</sup> | 249 lbs  |
| Fill Type   | Domestically Produced, Weed Free Rice Hulls                      |
| Functional Longevity <sup>2</sup>                 | up to 18 months  |
| Edging Material                                   | Edging Media Bags Available                                      |
| Staking Recommendation                            | Every 5-ft (stakes not included on precuts)                      |



Netting Sample



Fill Sample

<sup>1</sup>Tensile Strength is based on 12" diameter using ATSM D4595. See Filtrex TechLink #3342 for full tensile strength testing.

<sup>2</sup>Functional longevity ranges are estimates only. Site specific environmental conditions may result in significantly shorter or longer time periods.

### Item List:

| Item Number  | Diameter | Total Linear Feet per pallet | Unit Length   | Units per pallet | Stakes per pallet | Pallet Weight |
|--------------|----------|------------------------------|---------------|------------------|-------------------|---------------|
| RHW9-305     | 9-in     | 305-ft                       | 205-ft/100-ft | 2                | 63                | ~ 800 lbs     |
| RHWN9-14-25  | 9-in     | 350-ft                       | 25-ft         | 14               | 0                 | ~ 900 lbs     |
| RHW12-160    | 12-in    | 160-ft                       | 160-ft        | 1                | 33                | ~ 850 lbs     |
| RHWN12-10-20 | 12-in    | 200-ft                       | 20-ft         | 10               | 0                 | ~ 850 lbs     |
| RHWN12-20-10 | 12-in    | 200-ft                       | 10-ft         | 20               | 0                 | ~ 850 lbs     |

### Shipping Specs:

|                     |  |
|---------------------|--|
| Pallets per TL      | 28   |
| Shipping Dimensions | 40L x 48W x 66H  |
| Packaging           | 40 x 48 Pallet with Plastic Stretch-Wrap or Super Sack |
| Storage Life        | Under Roof - 6 months / Outdoors - 3 months            |

| Diameter | Stake Size (Nominal) |
|----------|----------------------|
| 9-in     | 1.5" x 1.5" x 24"    |
| 12-in    | 1.5" x 1.5" x 24"    |